



KMK / KLK Unit Coolers

60
Hz

PRODUCT DATA & INSTALLATION

Bulletin K30-KMK/CLK-PDI

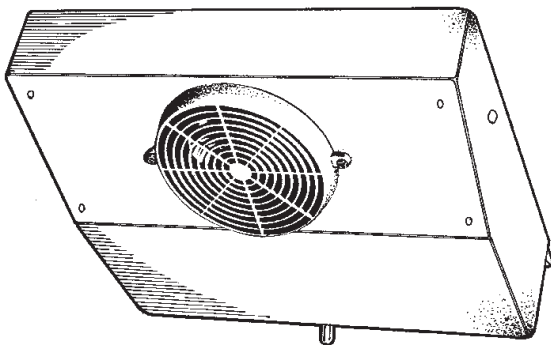
1083275

We are on the Internet 
www.keepriterefrigeration.com

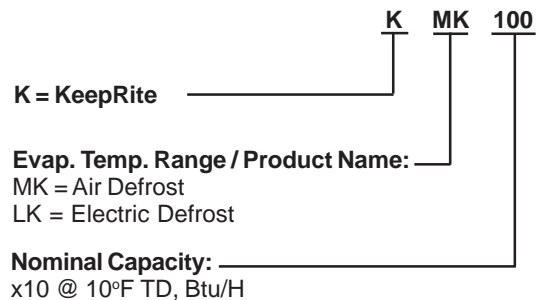
High and Medium Temperature Applications
(-10°F (-23.3°C) Space Temperatures and Above)

Air and Electric Defrost

Electrical Power: 115/1/60



NOMENCLATURE



FEATURES

- Attractive low silhouette allows maximum usage of refrigerated space.
- Lightweight cabinet made of smooth aluminum and corrosion proof hardware.
- Protective coating on all models.
- Generously sized coils provide balance with available condensing units and compressors.
- Rear air discharge reduces door sweating.
- Motors thermally protected and life lubricated.
- Quick-connect moisture-proof wiring harness.
- Light molded plastic fan blades ensure low noise level and optimum air circulation.
- Internally equalized expansion valve mounts inside of cabinet.
- Removable drain pan with self-retained fasteners.
- Knockouts for electrical connections conveniently located in cabinet.
- Opening at the back for refrigeration connections.
- Durable high density electric heaters for a fast and complete coil defrosting. (LK models only)
- Defrost termination and fan delay thermostat mounted and wired inside of cabinet. (LK Models only)
- Electrical junction box with terminal plate. (LK models only)
- R-134a, R-404A, R-507, R-22, R407A, R407B, R407C.

CAPACITY DATA ALL MODELS

Model			Air Defrost						Electric Defrost			
			KMK100	KMK130	KMK170	KMK230	KMK300	KMK430	KMK510	KLK90	KLK120	KLK160
Number Of Fans			1	2	2	3	4	4	3	1	2	2
Capacity BTUH (WATTS)	Evap Temp. °F (°C)	20 (-6.7)	1000 (290)	1300 (380)	1700 (500)	2300 (670)	3000 (880)	4300 (1260)	5100 (1490)	N/A	N/A	N/A
		-20 (-26.1)	N/A	N/A	N/A	N/A	N/A	N/A	N/A	900 (260)	1200 (350)	1600 (470)
Air Flow	CFM (L/S)		160 (76)	190 (90)	230 (109)	340 (160)	440 (207)	480 (227)	530 (250)	160 (76)	190 (90)	230 (109)

ELECTRICAL DATA

MODEL	FAN MOTORS		DEFROST HEATERS	
	QUANTITY	TOTAL AMPS	WATTS	TOTAL AMPS
		115/1/60		115/1/60
KMK100	1	.69	N/A	N/A
KMK130	2	1.38	N/A	N/A
KMK170	2	1.38	N/A	N/A
KMK230	3	2.07	N/A	N/A
KMK300	4	2.76	N/A	N/A
KMK430	3	1.53	N/A	N/A
KMK510	3	1.53	N/A	N/A
KLK90	1	.69	475	4.13
KLK120	2	1.38	600	5.20
KLK160	2	1.38	750	6.50

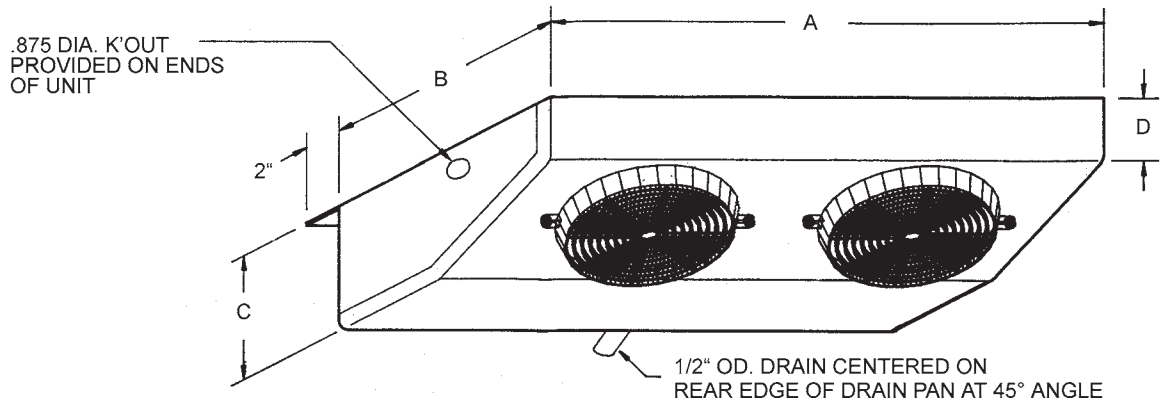
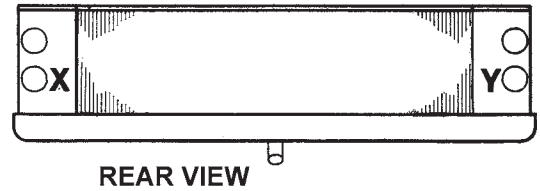
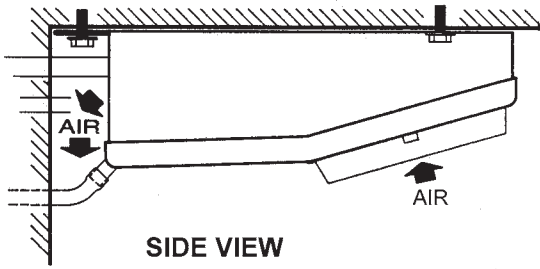
SPECIFICATIONS

MODEL	TUBING CONNECTIONS			APPROX. SHIPPING WEIGHT LBS (kg)
	SUCTION		LIQUID	
	TUBE DIA.	LOCATION *		
KMK100	3/8	X	1/2 FN	13 (5.9)
KMK130	3/8	X	1/2 FN	15 (6.8)
KMK170	1/2	X	1/2 FN	18 (8.1)
KMK230	1/2	X	1/2 FN	27 (12.2)
KMK300	1/2	X	1/2 FN	32 (14.5)
KMK430	1/2	Y	1/2 FN	43 (19.5)
KMK510	1/2	Y	1/2 FN	50 (22.7)
KLK90	3/8	X	1/2 FN	14 (6.4)
KLK120	3/8	X	1/2 FN	16 (7.3)
KLK160	3/8	X	1/2 FN	19 (8.6)

* Refer to "REAR VIEW" diagram on page 3

NOTE: LIQUID LINE CAN EXIT ANY OF REMAINING KNOCKOUTS IN CABINET

DIMENSIONAL DATA



TYPICAL MTG. HOLE SIZES FOR ALL MODELS	.281 X 1.000 SLOTS ALONG REAR EDGE	.281 DIA. HOLES INSIDE UNIT
---	---------------------------------------	--------------------------------

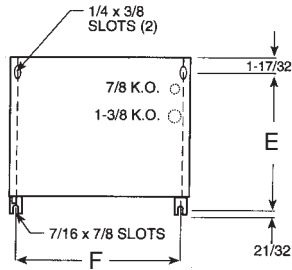


FIGURE 1

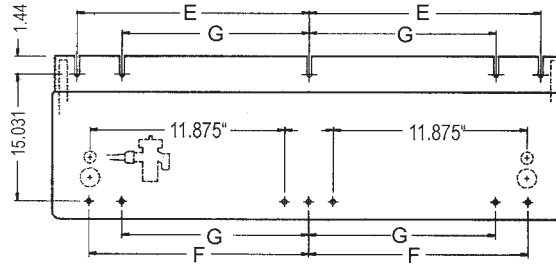


FIGURE 2

MODEL	FIGURE #	A	B	C	D	E	F	G
KMK100	1	16 1/2 (419)	14 1/2 (368)	4 1/2 (114)	2 5/8 (67)	14 (356)	14 11/16 (373)	N/A
KMK130	1	19 1/4 (489)	14 1/2 (368)	4 1/2 (114)	2 5/8 (67)	14 (356)	18 11/16 (475)	N/A
KMK170	1	24 (610)	15 1/2 (394)	4 1/2 (114)	2 5/8 (67)	15 (381)	22 3/16 (564)	N/A
KMK230	1	31 1/2 (800)	15 1/2 (394)	4 1/2 (114)	2 5/8 (67)	15 (381)	29 11/16 (754)	N/A
KMK300	1	40 (1016)	15 1/2 (394)	4 1/2 (114)	2 5/8 (67)	15 (381)	38 3/16 (970)	N/A
KMK430	2	46 1/4 (1175)	16 1/2 (419)	5 3/4 (146)	3 5/8 (92)	18 3/8 (467)	17 7/8 (454)	16 (406)
KMK510	2	55 1/4 (1403)	16 1/2 (419)	5 3/4 (146)	3 5/8 (92)	22 7/8 (581)	22 3/8 (568)	16 (406)
KLK90	1	16 1/2 (419)	14 1/2 (368)	4 1/2 (114)	2 5/8 (67)	14 (356)	14 11/16 (373)	N/A
KLK120	1	19 1/4 (489)	14 1/2 (368)	4 1/2 (114)	2 5/8 (67)	15 (381)	18 11/16 (475)	N/A
KLK160	1	24 (610)	15 1/2 (394)	4 1/2 (114)	2 5/8 (67)	15 (381)	22 3/16 (564)	N/A

SERVICE PARTS LIST

**Service Parts List
Label
To Be Attached
HERE**

PROJECT INFORMATION

System	
Model Number	Date of Start-Up
Serial Number	Service Contractor
Refrigerant	Phone
Electrical Supply	Fax

NATIONAL REFRIGERATION & AIR CONDITIONING PRODUCTS, INC.

539 DUNKSFERRY ROAD, BENSALEM, PA., USA 19020-5908
PHONE: (215)244-1400 1-800-523-7138 FAX (215)244-9579



All models except KMK430, KMK510

NATIONAL REFRIGERATION & AIR CONDITIONING CANADA CORP.

159 ROY BLVD., BRANTFORD, ONTARIO, CANADA N3R 7K1
PHONE: 1-800-463-9517 (519)751-0444 FAX (519)753-1140



Models KMK430, KMK510 only

Due to National Refrigeration's policy of continuous product improvement, we reserve the right to make changes without notice.