



# KH-Line Condensing Units

## PRODUCT DATA & SPECIFICATIONS

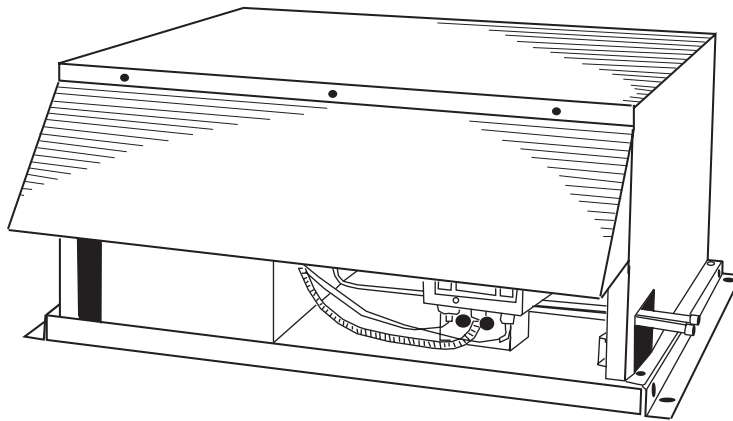
Bulletin K40-KH-PDS-12

1064609

Indoor & Outdoor Air Cooled  
Hermetic Condensing Units

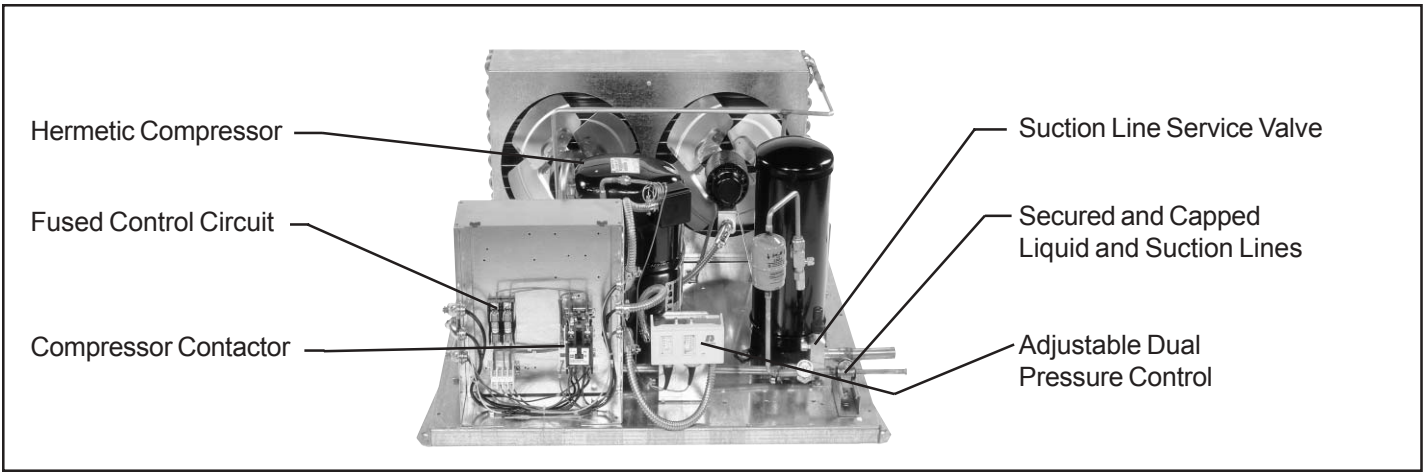
1/2 to 5 HP

We are on the Internet   
[www.keepriterefrigeration.com](http://www.keepriterefrigeration.com)



## CONTENTS

|                                | <b>Page</b> |
|--------------------------------|-------------|
| Features.....                  | 2           |
| Nomenclature.....              | 2           |
| <br><b>CAPACITY DATA</b>       |             |
| R22 - High/Medium Temp.....    | 3           |
| R22 - Low Temp.....            | 4           |
| R502 - Low Temp.....           | 5           |
| R407A, R507 - Low Temp.....    | 6           |
| R404A, R507 Medium Temp.....   | 7           |
| <br>Dimensional Data.....      |             |
| Specifications.....            | 8           |
| Electrical Specifications..... | 9           |
|                                | 10, 11      |



# FEATURES

## FEATURES AND OPTIONS

### Indoor Unit

**Standard Features Include:**

- Weatherproof electrical control box with compressor contactor and fused control circuit
- Welded hermetic compressor
- Copper tubing secured with Hydra-Zorb / Cush-A-Clamp
- Receiver with fusible plug and liquid shut off valve
- Adjustable dual high / low pressure control
- Suction service valve

### Outdoor Unit

**All Standard Features of Indoor Unit, Plus:**

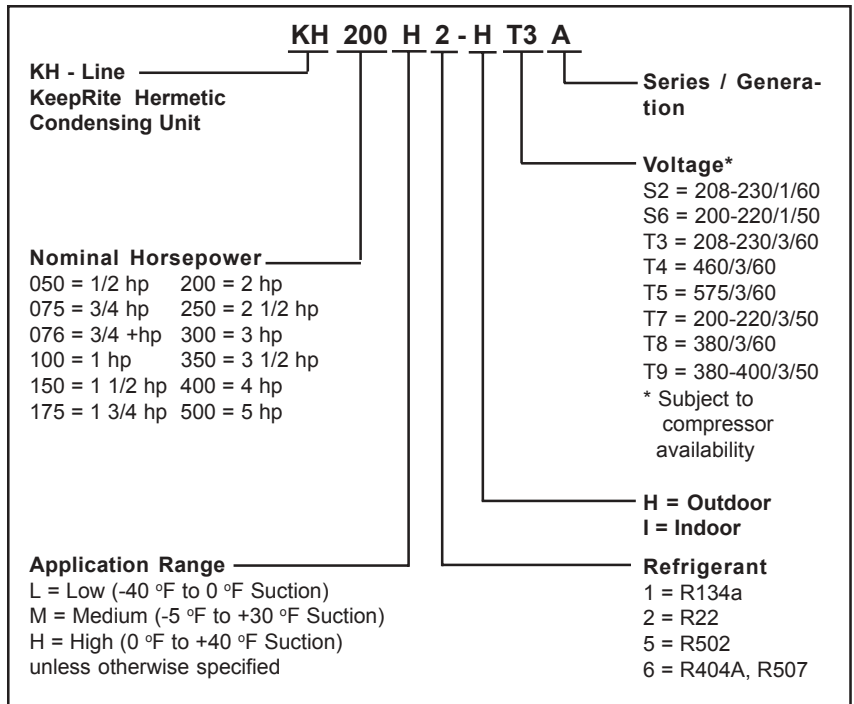
- Outdoor weather-resistant housing with removable hood
- Flooded head pressure control (non adjustable)
- Crankcase heater

### OPTIONAL FEATURES (FACTORY MOUNTED)

- Suction accumulator
- Sealed suction filter
- Heated and insulated receiver
- Sealed liquid line filter drier and sight glass
- Liquid line solenoid valve with 230 volt coil (shipped loose)
- Ball valve (shipped loose)
- Compressor circuit breaker
- Compressor time delay relay
- Pump down toggle switch
- Time clock
- Defrost contactor with fuse block
- Evaporator fan contactor with fuse block
- Adjustable pressure or ambient fan cycling control on 2 fan models only
- Fused disconnect
- Phase / voltage monitor

**OTHER OPTIONS AVAILABLE AT YOUR REQUEST - CONSULT FACTORY**

## NOMENCLATURE



# 60Hz PERFORMANCE CAPACITY

Application Data Calculated at 65 °F. Return Gas, 0 °F. Liquid Subcooling

## R22 - HIGH/MEDIUM TEMPERATURE - CAPACITY (BTU/HR)

Unit Shipped with mineral oil

| COND. UNIT MODEL                                       | SAT. SUCTION TEMP. ° F | 80 ° F Amb. | 90 ° F Amb. | 95 ° F Amb. | 100 ° F Amb. | 105 ° F Amb. |
|--|------------------------|-------------|-------------|-------------|--------------|--------------|
| <b>KH050H2</b><br>Compressor Model<br><b>JRF4-0050</b> | 40                     | 8642        | 7963        | 7612        | 7283         | 6978         |
|  | 30                     | 6968        | 6404        | 6150        | 5839         | 5584         |
|  | 25                     | 6197        | 5721        | 5438        | 5206         | 4958         |
|  | 20                     | 5507        | 5042        | 4818        | 4607         | 4382         |
|  | 10*                    | 4332        | 3963        | 3778        | 3594         | 3410         |
| <b>KH075H2</b><br>Compressor Model<br><b>RRG4-0100</b> | 40                     | 11423       | 10414       | 9955        | 9497         | 9091         |
|  | 30                     | 9337        | 8527        | 8120        | 7710         | 7252         |
|  | 25                     | 8314        | 7556        | 7229        | 6810         | 6441         |
|  | 20                     | 7380        | 6694        | 6355        | 5994         | 5653         |
|  | 10                     | 5706        | 5124        | 4844        | 4564         | 4284         |
| <b>KH100H2</b><br>Compressor Model<br><b>REK3-0125</b> | 40                     | 14777       | 13515       | 12934       | 12350        | 11832        |
|  | 30                     | 12061       | 11000       | 10484       | 9918         | 9451         |
|  | 25                     | 10755       | 9785        | 9299        | 8812         | 8325         |
|  | 20                     | 9551        | 8633        | 8173        | 7713         | 7253         |
|  | 10*                    | 7386        | 6554        | 6138        | 5721         | 5305         |
| <b>KH150H2</b><br>Compressor Model<br><b>CRA1-0150</b> | 40                     | 19433       | 18113       | 17410       | 16705        | 16001        |
|  | 30                     | 15753       | 14598       | 14021       | 13443        | 12865        |
|  | 25                     | 13989       | 12951       | 12431       | 11961        | 11440        |
|  | 20                     | 12338       | 11408       | 10943       | 10479        | 10015        |
|  | 10                     | 9166        | 8446        | 8052        | 7695         | 7339         |
| <b>KH200H2</b><br>Compressor Model<br><b>CRD1-0200</b> | 40                     | 24728       | 22926       | 22185       | 21359        | 20532        |
|  | 30                     | 20073       | 18653       | 17973       | 17293        | 16612        |
|  | 25                     | 17712       | 16497       | 15888       | 15280        | 14671        |
|  | 20                     | 15613       | 14527       | 13984       | 13441        | 12898        |
|  | 10                     | 11590       | 10753       | 10297       | 9882         | 9466         |
| <b>KH300H2</b><br>Compressor Model<br><b>CRJ3-0300</b> | 40                     | 35760       | 33035       | 31715       | 30436        | 29050        |
|  | 30                     | 29205       | 27026       | 25856       | 25076        | 23834        |
|  | 25                     | 26236       | 24105       | 23243       | 22126        | 21141        |
|  | 20                     | 23080       | 21282       | 20409       | 19534        | 18660        |
|  | 10                     | 17377       | 16037       | 15365       | 14619        | 13946        |
| <b>KH400H2</b><br>Compressor Model<br><b>CRM3-0400</b> | 40                     | 52318       | 48722       | 46918       | 45110        | 43154        |
|  | 30                     | 42304       | 39178       | 37496       | 35922        | 34484        |
|  | 25                     | 37661       | 34557       | 33223       | 31777        | 30320        |
|  | 20                     | 33081       | 30346       | 29028       | 27707        | 26386        |
|  | 10*                    | 24510       | 22403       | 21266       | 20215        | 19238        |
| <b>KH500H2</b><br>Compressor Model<br><b>CRN5-0500</b> | 40                     | 59589       | 55433       | 53445       | 51452        | 49455        |
|  | 30                     | 48149       | 44688       | 43094       | 41353        | 39355        |
|  | 25                     | 42908       | 39717       | 38111       | 36378        | 34770        |
|  | 20                     | 37744       | 34818       | 33238       | 31768        | 30297        |
|  | 10*                    | 28057       | 25703       | 24480       | 23344        | 22082        |

\* For +10 °F Sat. Suction Temps. Maximum return Gas Temp. +40 °F

# 60Hz PERFORMANCE CAPACITY

Application Data Calculated at 65 °F. Return Gas, 0 °F. Liquid Subcooling

## R502 - LOW TEMPERATURE - CAPACITY (BTU/HR)

Unit Shipped with mineral oil

| COND. UNIT MODEL                                | SAT. SUCTION TEMP. °F | 80 °F Amb. | 90 °F Amb. | 95 °F Amb. | 100 °F Amb. | 105 °F Amb. |
|---|-----------------------|------------|------------|------------|-------------|-------------|
| <b>KH150L5<br/>Compressor Model<br/>AH2480J</b> | 0                     | 13076      | 11713      | 11035      | 10359       | 9687        |
|   | -10                   | 10447      | 9282       | 8721       | 8190        | 7584        |
|   | -15                   | 9228       | 8192       | 7681       | 7128        | 6604        |
|   | -20                   | 8098       | 7149       | 6642       | 6160        | 5670        |
|   | -30                   | 6148       | 5290       | 4852       | 4434        | 4031        |
|   | -40                   | 4653       | 3880       | 3506       | 3120        | 2735        |
| <b>KH200L5<br/>Compressor Model<br/>AH2511K</b> | 0                     | 16982      | 15349      | 14536      | 13726       | 12921       |
|   | -10                   | 13454      | 11983      | 11254      | 10448       | 9744        |
|   | -15                   | 11791      | 10414      | 9658       | 8952        | 8287        |
|   | -20                   | 10229      | 8939       | 8244       | 7587        | 6929        |
|   | -30                   | 7328       | 6199       | 5635       | 5092        | 4528        |
|   | -40                   | 4902       | 3997       | 3535       | 3074        | 2602        |

# 60Hz PERFORMANCE CAPACITY

Application Data Calculated at 65 °F. Return Gas, 0 °F. Liquid Subcooling

## R404A, R507 - MEDIUM TEMPERATURE - CAPACITY (BTU/HR)

Unit Shipped with polyolester oil

| COND. UNIT MODEL                                     | SAT. SUCTION TEMP. °F | 80 °F Amb. | 90 °F Amb. | 95 °F Amb. | 100 °F Amb. | 105 °F Amb. |
|--|-----------------------|------------|------------|------------|-------------|-------------|
| <b>KH050M6</b><br>Compressor Model<br><b>RS43C1E</b> | 30                    | 8000       | 7040       | 6560       | 6040        | 5580        |
|  | 25                    | 7250       | 6370       | 5890       | 5460        | 5030        |
|  | 20                    | 6510       | 5670       | 5270       | 4880        | 4490        |
|  | 10                    | 5020       | 4390       | 4080       | 3770        | 3460        |
|  | 0                     | 3630       | 3190       | 2980       | 2770        | 2560        |
| <b>KH075M6</b><br>Compressor Model<br><b>RS64C1E</b> | 30                    | 9370       | 8355       | 7860       | 7350        | 6850        |
|  | 25                    | 8700       | 7750       | 7270       | 6810        | 6350        |
|  | 20                    | 7980       | 7130       | 6700       | 6270        | 5840        |
|  | 10                    | 6600       | 5870       | 5500       | 5150        | 4800        |
|  | 0                     | 5290       | 4680       | 4380       | 4080        | 3780        |
| <b>KH100M6</b><br>Compressor Model<br><b>RS97C1E</b> | 30                    | 16180      | 14460      | 13600      | 12750       | 11900       |
|  | 25                    | 14850      | 13270      | 12490      | 11720       | 10940       |
|  | 20                    | 13510      | 12080      | 11380      | 10670       | 9960        |
|  | 10                    | 10900      | 9730       | 9140       | 8560        | 7980        |
|  | 0                     | 8440       | 7480       | 7000       | 6530        | 6060        |
| <b>KH150M6</b><br>Compressor Model<br><b>CS10K6E</b> | 30                    | 18320      | 16160      | 15090      | 14020       | 12980       |
|  | 25                    | 16730      | 14750      | 13750      | 12790       | 11820       |
|  | 20                    | 15130      | 13310      | 12420      | 11530       | 10630       |
|  | 10                    | 11960      | 10440      | 9690       | 8940        | 8190        |
|  | 0                     | 8910       | 7650       | 7020       | 6390        | 5770        |
| <b>KH200M6</b><br>Compressor Model<br><b>CS12K6E</b> | 30                    | 20890      | 18600      | 17460      | 16340       | 15220       |
|  | 25                    | 19050      | 16940      | 15880      | 14850       | 13800       |
|  | 20                    | 17220      | 15270      | 14310      | 13340       | 12380       |
|  | 10                    | 13660      | 12010      | 11190      | 10380       | 9570        |
|  | 0                     | 10300      | 8940       | 8270       | 7590        | 6930        |
| <b>KH250M6</b><br>Compressor Model<br><b>CS14K6E</b> | 30                    | 23230      | 20560      | 19300      | 18080       | 16830       |
|  | 25                    | 21340      | 18880      | 17750      | 16600       | 15450       |
|  | 20                    | 19340      | 17210      | 16160      | 15100       | 14060       |
|  | 10                    | 15670      | 13900      | 13020      | 12140       | 11260       |
|  | 0                     | 12210      | 10760      | 10030      | 9320        | 8615        |
| <b>KH300M6</b><br>Compressor Model<br><b>CS18K6E</b> | 30                    | 31330      | 28010      | 26360      | 24520       | 22880       |
|  | 25                    | 28710      | 25635      | 23920      | 22400       | 20880       |
|  | 20                    | 26080      | 23080      | 21680      | 20280       | 18880       |
|  | 10                    | 20650      | 18330      | 17173      | 16020       | 14870       |
|  | 0                     | 15430      | 13640      | 12740      | 11850       | 10970       |
| <b>KH350M6</b><br>Compressor Model<br><b>CS20K6E</b> | 30                    | 34380      | 30350      | 28430      | 26600       | 24700       |
|  | 25                    | 31390      | 27680      | 25970      | 24250       | 22520       |
|  | 20                    | 28230      | 25040      | 23460      | 21880       | 20295       |
|  | 10                    | 22460      | 19800      | 18470      | 17150       | 15830       |
|  | 0                     | 17130      | 14900      | 13800      | 12690       | 11600       |
| <b>KH400M6</b><br>Compressor Model<br><b>CS27K3E</b> | 30                    | 44510      | 39710      | 37510      | 35310       | 33110       |
|  | 25                    | 40120      | 35940      | 33880      | 31800       | 29530       |
|  | 20                    | 36140      | 32260      | 30310      | 28160       | 26230       |
|  | 10                    | 28530      | 25070      | 23430      | 21800       | 20170       |
|  | 0                     | 21470      | 18870      | 17570      | 16280       | 15000       |
| <b>KH500M6</b><br>Compressor Model<br><b>CS33K3E</b> | 30                    | 49630      | 44780      | 42110      | 39680       | 37290       |
|  | 25                    | 45620      | 40760      | 38470      | 36190       | 33920       |
|  | 20                    | 41650      | 37040      | 34880      | 32725       | 30580       |
|  | 10                    | 33630      | 29800      | 27700      | 25800       | 23910       |
|  | 0                     | 26290      | 22870      | 21250      | 19630       | 18040       |

# 60Hz PERFORMANCE CAPACITY

Application Data Calculated at 65 °F. Return Gas, 0 °F. Liquid Subcooling

## R404A, R507 - EXTENDED MEDIUM TEMPERATURE - CAPACITY (BTU/HR)

For medium temperature range (0° to 30°F) see page 5

Unit Shipped with polyolester oil

| COND. UNIT MODEL                                     | SAT. SUCTION TEMP. °F | 80°F  | 90°F  | 95°F  | 100°F | 105°F |
|--|-----------------------|-------|-------|-------|-------|-------|
| <b>KH050M6</b><br>Compressor Model<br><b>RS43C1E</b> | -5°F                  | 3290  | 2940  | 2770  | 2600  | 2420  |
|  | -10°F                 | 2820  | 2570  | 2450  | 2330  | 2200  |
|  | -15°F                 | 2350  | 2150  | 2040  | 1940  | 1840  |
|  | -20°F                 | 2010  | 1760  | 1640  | 1520  | 1400  |
|  | -25°F                 | 1510  | 1360  | 1280  | 1200  | 1120  |
| <b>KH075M6</b><br>Compressor Model<br><b>RS64C1E</b> | -5°F                  | 4850  | 4310  | 4040  | 3760  | 3490  |
|  | -10°F                 | 4280  | 3790  | 3540  | 3300  | 3050  |
|  | -15°F                 | 3740  | 3290  | 3070  | 2840  | 2620  |
|  | -20°F                 | 3220  | 2790  | 2580  | 2370  | 2150  |
|  | -25°F                 | 2690  | 2300  | 2110  | 1910  | 1720  |
| <b>KH100M6</b><br>Compressor Model<br><b>RS97C1E</b> | -5°F                  | 7260  | 6430  | 6010  | 5590  | 5180  |
|  | -10°F                 | 6310  | 5540  | 5160  | 4780  | 4400  |
|  | -15°F                 | 5390  | 4690  | 4340  | 3980  | 3630  |
|  | -20°F                 | 4560  | 3870  | 3520  | 3180  | 2830  |
|  | -25°F                 | 3720  | 3050  | 2720  | 2390  | 2050  |
| <b>KH150M6</b><br>Compressor Model<br><b>CS10K6E</b> | -5°F                  | 7740  | 6650  | 6100  | 5560  | 5010  |
|  | -10°F                 | 6520  | 5530  | 5040  | 4550  | 4050  |
|  | -15°F                 | 5420  | 4520  | 4070  | 3630  | 3180  |
|  | -20°F                 | 4500  | 3700  | 3300  | 2890  | 2490  |
|  | -25°F                 | 3570  | 2850  | 2490  | 2130  | 1770  |
| <b>KH200M6</b><br>Compressor Model<br><b>CS12K6E</b> | -5°F                  | 9240  | 8010  | 7390  | 6770  | 6150  |
|  | -10°F                 | 7870  | 6760  | 6210  | 5650  | 5100  |
|  | -15°F                 | 6580  | 5600  | 5110  | 4620  | 4130  |
|  | -20°F                 | 5490  | 4590  | 4150  | 3700  | 3250  |
|  | -25°F                 | 4320  | 3560  | 3170  | 2790  | 2410  |
| <b>KH250M6</b><br>Compressor Model<br><b>CS14K6E</b> | -5°F                  | 10880 | 9580  | 8930  | 8280  | 7640  |
|  | -10°F                 | 9360  | 8200  | 7630  | 7050  | 6470  |
|  | -15°F                 | 7950  | 6930  | 6420  | 5910  | 5400  |
|  | -20°F                 | 6780  | 5850  | 5390  | 4920  | 4460  |
|  | -25°F                 | 5590  | 4760  | 4350  | 3930  | 3520  |
| <b>KH300M6</b><br>Compressor Model<br><b>CS18K6E</b> | -5°F                  | 13700 | 11960 | 11090 | 10220 | 9350  |
|  | -10°F                 | 11660 | 10150 | 9400  | 8650  | 7890  |
|  | -15°F                 | 9790  | 8510  | 7880  | 7240  | 6600  |
|  | -20°F                 | 8300  | 7090  | 6490  | 5880  | 5270  |
|  | -25°F                 | 6760  | 5750  | 5250  | 4750  | 4250  |
| <b>KH350M6</b><br>Compressor Model<br><b>CS20K6E</b> | -5°F                  | 15360 | 13280 | 12240 | 11200 | 10160 |
|  | -10°F                 | 13370 | 11460 | 10510 | 9560  | 8610  |
|  | -15°F                 | 11470 | 9700  | 8820  | 7940  | 7050  |
|  | -20°F                 | 9640  | 7960  | 7110  | 6270  | 5430  |
|  | -25°F                 | 7770  | 6200  | 5420  | 4630  | 3840  |
| <b>KH400M6</b><br>Compressor Model<br><b>CS27K3E</b> | -5°F                  | 19180 | 16700 | 15470 | 14230 | 12990 |
|  | -10°F                 | 16630 | 14390 | 13280 | 12160 | 11050 |
|  | -15°F                 | 14270 | 12260 | 11260 | 10250 | 9250  |
|  | -20°F                 | 12240 | 10460 | 9580  | 8690  | 7800  |
|  | -25°F                 | 10140 | 8580  | 7800  | 7020  | 6240  |
| <b>KH500M6</b><br>Compressor Model<br><b>CS33K3E</b> | -5°F                  | 22730 | 19760 | 18280 | 16800 | 15310 |
|  | -10°F                 | 19890 | 17260 | 15940 | 14620 | 13300 |
|  | -15°F                 | 17120 | 14840 | 13700 | 12560 | 11420 |
|  | -20°F                 | 14400 | 12330 | 11290 | 10250 | 9220  |
|  | -25°F                 | 11600 | 9890  | 9030  | 8170  | 7310  |

# 60Hz PERFORMANCE CAPACITY

Application Data Calculated at 65 °F. Return Gas, 0 °F. Liquid Subcooling

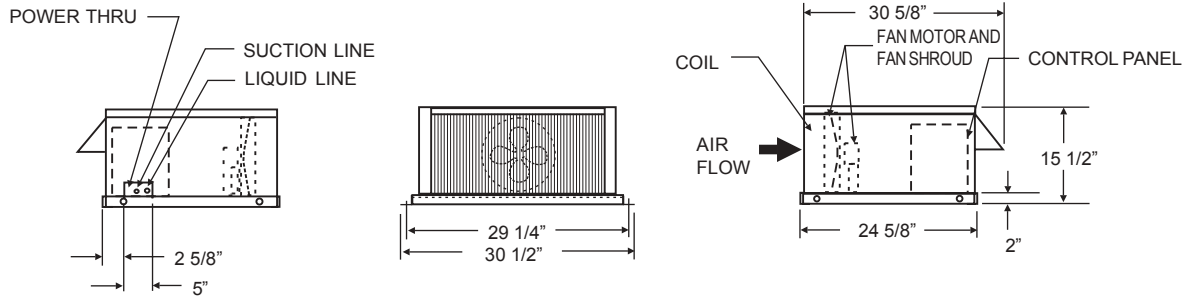
## R404A, R507 - LOW TEMPERATURE - CAPACITY (BTU/HR)

Unit Shipped with polyolester oil

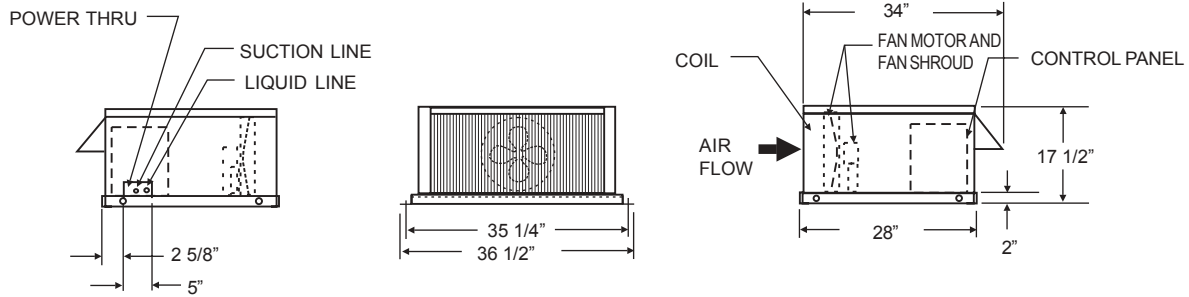
| COND. UNIT MODEL                                      | SAT. SUCTION TEMP. °F | 80°F  | 90°F  | 95°F  | 100°F | 105°F |
|---|-----------------------|-------|-------|-------|-------|-------|
| <b>KH050L6</b><br>Compressor Model<br><b>AJ2419Z</b>  | -5°F                  | 3570  | 3100  | 2870  | 2630  | 2410  |
|   | -10°F                 | 3200  | 2750  | 2530  | 2310  | 2100  |
|   | -15°F                 | 2830  | 2410  | 2210  | 2000  | 1800  |
|   | -20°F                 | 2470  | 2080  | 1890  | 1700  | 1510  |
|   | -30°F                 | 1790  | 1460  | 1300  | 1140  | 980   |
|   | -40°F                 | 1150  | 900   | 770   | 640   | 460   |
| <b>KH075L6</b><br>Compressor Model<br><b>AJ2425Z</b>  | -5°F                  | 5025  | 4340  | 4000  | 3670  | 3340  |
|   | -10°F                 | 4350  | 3720  | 3410  | 3100  | 2790  |
|   | -15°F                 | 3710  | 3130  | 2840  | 2560  | 2270  |
|   | -20°F                 | 3120  | 2580  | 2320  | 2050  | 1800  |
|   | -30°F                 | 2080  | 1630  | 1410  | 1200  | 980   |
|   | -40°F                 | 1290  | 930   | 750   | 510   | 370   |
| <b>KH099L6</b><br>Compressor Model<br><b>AWA2440Z</b> | -5°F                  | 7950  | 6870  | 6330  | 5790  | 5250  |
|   | -10°F                 | 6910  | 5940  | 5450  | 4970  | 4480  |
|   | -15°F                 | 5900  | 5040  | 4610  | 4180  | 3750  |
|   | -20°F                 | 4950  | 4200  | 3820  | 3450  | 3080  |
|   | -30°F                 | 3240  | 2710  | 2440  | 2170  | 1910  |
|   | -40°F                 | 1880  | 1570  | 1410  | 1250  | 1100  |
| <b>KH151L6</b><br>Compressor Model<br><b>AWA2460Z</b> | -5°F                  | 11770 | 10260 | 9510  | 8750  | 7990  |
|   | -10°F                 | 10370 | 8990  | 8290  | 7600  | 6900  |
|   | -15°F                 | 9000  | 7750  | 7120  | 6490  | 5870  |
|   | -20°F                 | 7710  | 6590  | 6030  | 5470  | 4910  |
|   | -30°F                 | 5340  | 4510  | 4090  | 3670  | 3250  |
|   | -40°F                 | 3230  | 2660  | 2370  | 2090  | 1800  |
| <b>KH201L6</b><br>Compressor Model<br><b>AVA2490Z</b> | -5°F                  | 16100 | 14190 | 13230 | 12270 | 11320 |
|   | -10°F                 | 14190 | 12480 | 11620 | 10770 | 9920  |
|   | -15°F                 | 12390 | 10870 | 10120 | 9360  | 8600  |
|   | -20°F                 | 10700 | 9370  | 8700  | 8030  | 7370  |
|   | -30°F                 | 7670  | 6700  | 6220  | 5740  | 5260  |
|   | -40°F                 | 5010  | 4290  | 3930  | 3560  | 3200  |
| <b>KH290L6</b><br>Compressor Model<br><b>AVA2512Z</b> | -5°F                  | 20420 | 17990 | 16780 | 15570 | 14360 |
|   | -10°F                 | 17980 | 15820 | 14740 | 13660 | 12580 |
|   | -15°F                 | 15690 | 13780 | 12820 | 11860 | 10900 |
|   | -20°F                 | 13550 | 11870 | 11020 | 10180 | 9330  |
|   | -30°F                 | 9710  | 8490  | 7880  | 7270  | 6660  |
|   | -40°F                 | 6340  | 5430  | 4970  | 4510  | 4050  |

# KH - LINE DIMENSIONAL DATA

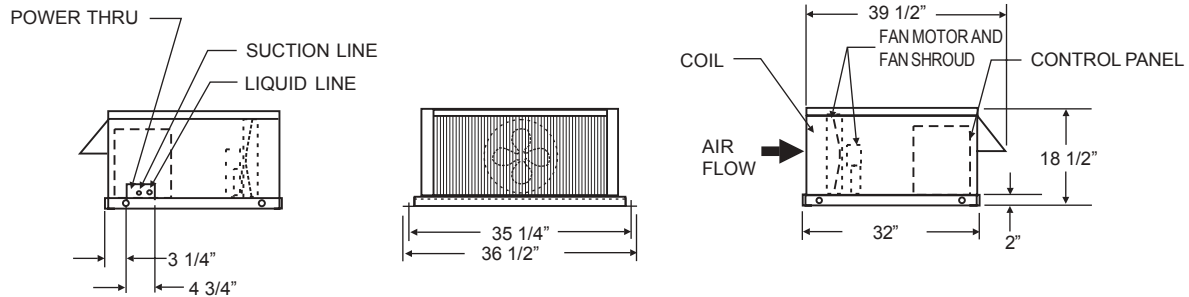
## 1/2 AND 3/4 HP



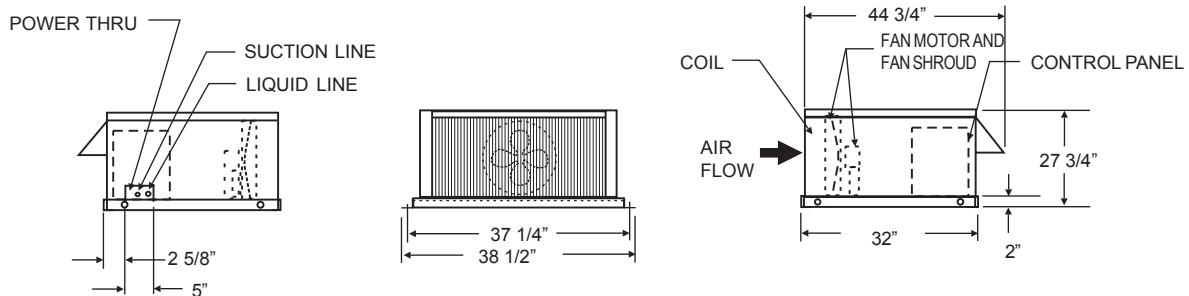
## 1 HP



## 1 1/2 AND 2 1/2 HP



## 3, 4 AND 5 HP



## KH - LINE SPECIFICATIONS

| MODEL                   | COMPRESSOR  | CONNECTIONS |              | RECEIVER<br>CAPACITY @ 90%<br>FULL (LBS) | SHIPPING WT.<br>(LBS) |
|-------------------------|-------------|-------------|--------------|--|-----------------------|
|                         |             | LIQUID (OD) | SUCTION (OD) |  |                       |
| KH050H2 - HS2           | JRF4 - 0050 | 3/8         | 1/2          | 6  | 180                   |
| KH075H2 - HS2           | RRG4 - 0100 | 3/8         | 5/8          | 6  | 200                   |
| KH100H2 - HS2, HT3, HT4 | REK3 - 0125 | 3/8         | 5/8          | 9  | 250                   |
| KH150H2 - HS2, HT3, HT4 | CRA1 - 0150 | 3/8         | 7/8          | 15                                       | 290                   |
| KH200H2 - HS2, HT3, HT4 | CRD1 - 0200 | 3/8         | 7/8          | 15                                       | 286                   |
| KH300H2 - HS2, HT3, HT4 | CRJ3 - 0300 | 1/2         | 1 1/8        | 21                                       | 360                   |
| KH400H2 - HS2, HT3, HT4 | CRM3 - 0400 | 1/2         | 1 1/8        | 21                                       | 372                   |
| KH500H2 - HS2, HT3, HT4 | CRN5 - 0500 | 1/2         | 1 1/8        | 21                                       | 380                   |
| KH150L5 - HS2, HT3      | AH2480J     | 1/2         | 7/8          | 15                                       | 285                   |
| KH200L5 - HS2, HT3      | AH2511K     | 1/2         | 7/8          | 15                                       | 300                   |
| KH050M6 - HS2           | RS43C1E     | 3/8         | 5/8          | 5  | 195                   |
| KH075M6 - HS2           | RS64C1E     | 3/8         | 5/8          | 5  | 209                   |
| KH100M6 - HS2, HT3      | RS97C1E     | 3/8         | 5/8          | 7  | 263                   |
| KH150M6 - HS2, HT3, HT4 | CS10K6E     | 1/2         | 7/8          | 12                                       | 295                   |
| KH200M6 - HS2, HT3      | CS12K6E     | 1/2         | 7/8          | 12                                       | 289                   |
| KH250M6 - HS2, HT3, HT4 | CS14K6E     | 1/2         | 1 1/8        | 12                                       | 290                   |
| KH300M6 - HS2, HT3, HT4 | CS18K6E     | 1/2         | 1 1/8        | 16                                       | 360                   |
| KH350M6 - HS2, HT3, HT4 | CS20K6E     | 1/2         | 1 1/8        | 16                                       | 361                   |
| KH400M6 - HS2, HT3, HT4 | CS27K3E     | 1/2         | 1 1/8        | 16                                       | 368                   |
| KH500M6 - HS2, HT3, HT4 | CS33K3E     | 5/8         | 1 1/8        | 16                                       | 372                   |
| KH050L6 - HS2           | AJ2419Z     | 3/8         | 1/2          | 5  | 190                   |
| KH075L6 - HS2           | AJ2425Z     | 3/8         | 1/2          | 5  | 210                   |
| KH099L6 - HS2, HT3      | AWA2440Z    | 3/8         | 5/8          | 7  | 260                   |
| KH151L6 - HS2, HT3      | AWA2460Z    | 1/2         | 7/8          | 12                                       | 280                   |
| KH201L6 - HS2, HT3, HT4 | AVA2490Z    | 1/2         | 7/8          | 12                                       | 300                   |
| KH290L6 - HS2, HT3, HT4 | AVA2512Z    | 5/8         | 1 1/8        | 16                                       | 340                   |

## KH - LINE 60 Hz ELECTRICAL SPECIFICATIONS

| MODEL         | POWER SUPPLY | COMPRESSOR |     | CONDENSER FANS |      |      | TOTAL AMPS | M.C.A. | M.O.P. |
|---------------|--------------|------------|-----|----------------|------|------|------------|--------|--------|
|               |              | RLA        | LRA | QTY            | Hp@  | FLA@ |            |        |        |
| KH150L5 - HS2 | 230/1/60     | 12.1       | 75  | 2              | 1/15 | 0.85 | 13.8       | 16.8   | 25     |
| KH150L5 - HT3 | 208-230/3/60 | 6.2        | 47  | 2              | 1/15 | 0.85 | 7.9        | 9.5    | 15     |
| KH200L5 - HS2 | 208-230/1/60 | 11.4       | 81  | 2              | 1/15 | 0.85 | 13.1       | 16.0   | 25     |
| KH200L5 - HT3 | 208-230/3/60 | 7.0        | 65  | 2              | 1/15 | 0.85 | 8.7        | 10.5   | 20     |
| KH050H2 - HS2 | 208-230/1/60 | 6.4        | 34  | 1              | 1/20 | .7   | 7.1        | 8.7    | 15     |
| KH075H2 - HS2 | 208-230/1/60 | 6.0        | 34  | 1              | 1/20 | .7   | 6.7        | 8.2    | 15     |
| KH100H2 - HS2 | 208-230/1/60 | 7.0        | 34  | 2              | 1/20 | .7   | 8.4        | 10.2   | 15     |
| KH100H2 - HT3 | 208-230/3/60 | 4.7        | 31  | 2              | 1/20 | .7   | 6.1        | 7.3    | 15     |
| KH150H2 - HS2 | 208-230/1/60 | 10.8       | 48  | 2              | 1/15 | 0.85 | 12.5       | 15.2   | 25     |
| KH150H2 - HT3 | 208-230/3/60 | 9.3        | 58  | 2              | 1/15 | 0.85 | 11.0       | 13.3   | 20     |
| KH150H2 - HT4 | 460/3/60     | 4.1        | 17  | 2              | 1/15 | 0.43 | 5.0        | 6.0    | 15     |
| KH200H2 - HS2 | 208-230/1/60 | 13.4       | 59  | 2              | 1/15 | 0.85 | 15.1       | 18.5   | 30     |
| KH200H2 - HT3 | 208-230/3/60 | 8.7        | 50  | 2              | 1/15 | 0.85 | 10.4       | 12.6   | 20     |
| KH200H2 - HT4 | 460/3/60     | 4.2        | 23  | 2              | 1/15 | 0.43 | 5.1        | 6.1    | 15     |
| KH300H2 - HS2 | 208-230/1/60 | 22.5       | 93  | 1              | 1/3  | 3.2  | 25.7       | 31.3   | 50     |
| KH300H2 - HT3 | 208-230/3/60 | 14.3       | 74  | 1              | 1/3  | 3.2  | 17.5       | 21.1   | 30     |
| KH300H2 - HT4 | 460/3/60     | 6.7        | 41  | 1              | 1/3  | 1.6  | 8.3        | 10.0   | 15     |
| KH400H2 - HS2 | 208-230/1/60 | 30.7       | 135 | 1              | 1/3  | 3.2  | 33.9       | 41.6   | 70     |
| KH400H2 - HT3 | 208-230/3/60 | 19.6       | 105 | 1              | 1/3  | 3.2  | 22.8       | 27.7   | 40     |
| KH400H2 - HT4 | 460/3/60     | 8.6        | 45  | 1              | 1/3  | 1.6  | 10.2       | 12.4   | 20     |
| KH500H2 - HS2 | 208-230/1/60 | 34.3       | 142 | 1              | 1/3  | 3.2  | 37.5       | 46.1   | 70     |
| KH500H2 - HT3 | 208-230/3/60 | 21.4       | 130 | 1              | 1/3  | 3.2  | 24.6       | 30.0   | 50     |
| KH500H2 - HT4 | 460/3/60     | 9.6        | 65  | 1              | 1/3  | 1.6  | 11.2       | 13.6   | 20     |

M.O.P. = Maximum Overcurrent Protection

M.C.A. = Minimum Circuit Ampacity

## KH - LINE 60 Hz ELECTRICAL SPECIFICATIONS

| MODEL         | POWER SUPPLY | COMPRESSOR |       | CONDENSER FANS |      |       | TOTAL AMPS | M.C.A. | M.O.P. |
|---------------|--------------|------------|-------|----------------|------|-------|------------|--------|--------|
|               |              | RLA        | LRA   | QTY            | HP @ | FLA @ |            |        |        |
| KH050M6 - HS2 | 208-230/1/60 | 5.7        | 24    | 1              | 1/20 | 0.7   | 6.4        | 7.8    | 15     |
| KH075M6 - HS2 | 208-230/1/60 | 9.2        | 45    | 1              | 1/20 | 0.7   | 9.9        | 12.2   | 20     |
| KH100M6 - HS2 | 208-230/1/60 | 11         | 51    | 2              | 1/20 | 0.7   | 12.4       | 15.2   | 20     |
| KH100M6 - HT3 | 208-230/3/60 | 7          | 35    | 2              | 1/20 | 0.7   | 8.4        | 10.2   | 15     |
| KH150M6 - HS2 | 208-230/1/60 | 10.9       | 56    | 2              | 1/15 | 0.85  | 12.6       | 15.3   | 20     |
| KH150M6 - HT3 | 208-230/3/60 | 7.5        | 51    | 2              | 1/15 | 0.85  | 9.2        | 11.1   | 15     |
| KH150M6 - HT4 | 460/3/60     | 3.6        | 25    | 2              | 1/15 | 0.43  | 4.5        | 5.4    | 15     |
| KH200M6 - HS2 | 208-230/1/60 | 10.9       | 56    | 2              | 1/15 | 0.85  | 12.6       | 15.3   | 20     |
| KH200M6 - HT3 | 208-230/3/60 | 7.5        | 51    | 2              | 1/15 | 0.85  | 9.2        | 11.1   | 15     |
| KH250M6 - HS2 | 208-230/1/60 | 12.4       | 61    | 2              | 1/15 | 0.85  | 14.1       | 17.2   | 25     |
| KH250M6 - HT3 | 208-230/3/60 | 9.1        | 55    | 2              | 1/15 | 0.85  | 10.8       | 13.1   | 20     |
| KH250M6 - HT4 | 460/3/60     | 4.7        | 28    | 2              | 1/15 | 0.43  | 5.6        | 6.7    | 15     |
| KH300M6 - HS2 | 208-230/1/60 | 16         | 82    | 1              | 1/3  | 3.2   | 19.2       | 23.2   | 30     |
| KH300M6 - HT3 | 208-230/3/60 | 10.4       | 66    | 1              | 1/3  | 3.2   | 13.6       | 16.2   | 25     |
| KH300M6 - HT4 | 460/3/60     | 4.3        | 33    | 1              | 1/3  | 1.6   | 5.9        | 7.0    | 15     |
| KH350M6 - HS2 | 208-230/1/60 | 18.6       | 96    | 1              | 1/3  | 3.2   | 21.8       | 26.5   | 40     |
| KH350M6 - HT3 | 208-230/3/60 | 11.4       | 75    | 1              | 1/3  | 3.2   | 14.6       | 17.5   | 25     |
| KH350M6 - HT4 | 460/3/60     | 5.1        | 40    | 1              | 1/3  | 1.6   | 6.7        | 8.0    | 15     |
| KH400M6 - HS2 | 208-230/1/60 | 23.9       | 95    | 1              | 1/3  | 3.2   | 27.1       | 33.1   | 50     |
| KH400M6 - HT3 | 208-230/3/60 | 15.6       | 82    | 1              | 1/3  | 3.2   | 18.5       | 22.3   | 30     |
| KH400M6 - HT4 | 460/3/60     | 8.5        | 41    | 1              | 1/3  | 1.6   | 10.1       | 12.2   | 20     |
| KH500M6 - HS2 | 208-230/1/60 | 30.7       | 125   | 1              | 1/3  | 3.2   | 33.9       | 41.6   | 70     |
| KH500M6 - HT3 | 208-230/3/60 | 20.7       | 90    | 1              | 1/3  | 3.2   | 23.9       | 29.1   | 40     |
| KH500M6 - HT4 | 460/3/60     | 9.9        | 45    | 1              | 1/3  | 1.6   | 11.5       | 14     | 20     |
| KH050L6 - HS2 | 208-230/1/60 | 3          | 34    | 1              | 1/20 | 0.7   | 3.7        | 4.5    | 15     |
| KH075L6 - HS2 | 208-230/1/60 | 3.2        | 39    | 1              | 1/20 | 0.7   | 3.9        | 4.7    | 15     |
| KH099L6 - HS2 | 208-230/1/60 | 8.7        | 73    | 2              | 1/15 | 0.85  | 10.4       | 12.6   | 20     |
| KH099L6 - HT3 | 208-230/3/60 | 4.9        | 40.5  | 2              | 1/15 | 0.85  | 6.6        | 7.8    | 15     |
| KH151L6 - HS2 | 208-230/1/60 | 12.6       | 86    | 2              | 1/15 | 0.85  | 14.3       | 17.5   | 25     |
| KH151L6 - HT3 | 208-230/3/60 | 8.3        | 63.4  | 2              | 1/15 | 0.85  | 10         | 12.1   | 20     |
| KH201L6 - HS2 | 208-230/1/60 | 16.2       | 106.6 | 2              | 1/15 | 0.85  | 17.9       | 22     | 30     |
| KH201L6 - HT3 | 208-230/3/60 | 9.9        | 65.1  | 2              | 1/15 | 0.85  | 11.6       | 14.1   | 20     |
| KH201L6 - HT4 | 460/3/60     | 5.3        | 38.3  | 2              | 1/15 | 0.43  | 6.2        | 7.5    | 15     |
| KH290L6 - HS2 | 208-230/1/60 | 20.8       | 120.3 | 1              | 1/3  | 3.2   | 24         | 29.2   | 40     |
| KH290L6 - HT3 | 208-230/3/60 | 11         | 65.1  | 1              | 1/3  | 3.2   | 14.2       | 17     | 25     |
| KH290L6 - HT4 | 460/3/60     | 6.2        | 38.3  | 1              | 1/3  | 1.6   | 7.8        | 9.4    | 15     |

M.O.P. = Maximum Overcurrent Protection  
M.C.A. = Minimum Circuit Ampacity



**NATIONAL REFRIGERATION & AIR CONDITIONING CANADA CORP.**  
159 ROY BLVD., BRANTFORD, ONTARIO, CANADA N3T 5Y6  
PHONE: 1-800-463-9517 (519)751-0444 FAX (519)753-1140



*Due to National Refrigeration's policy of continuous product improvement, we reserve the right to make changes without notice.*